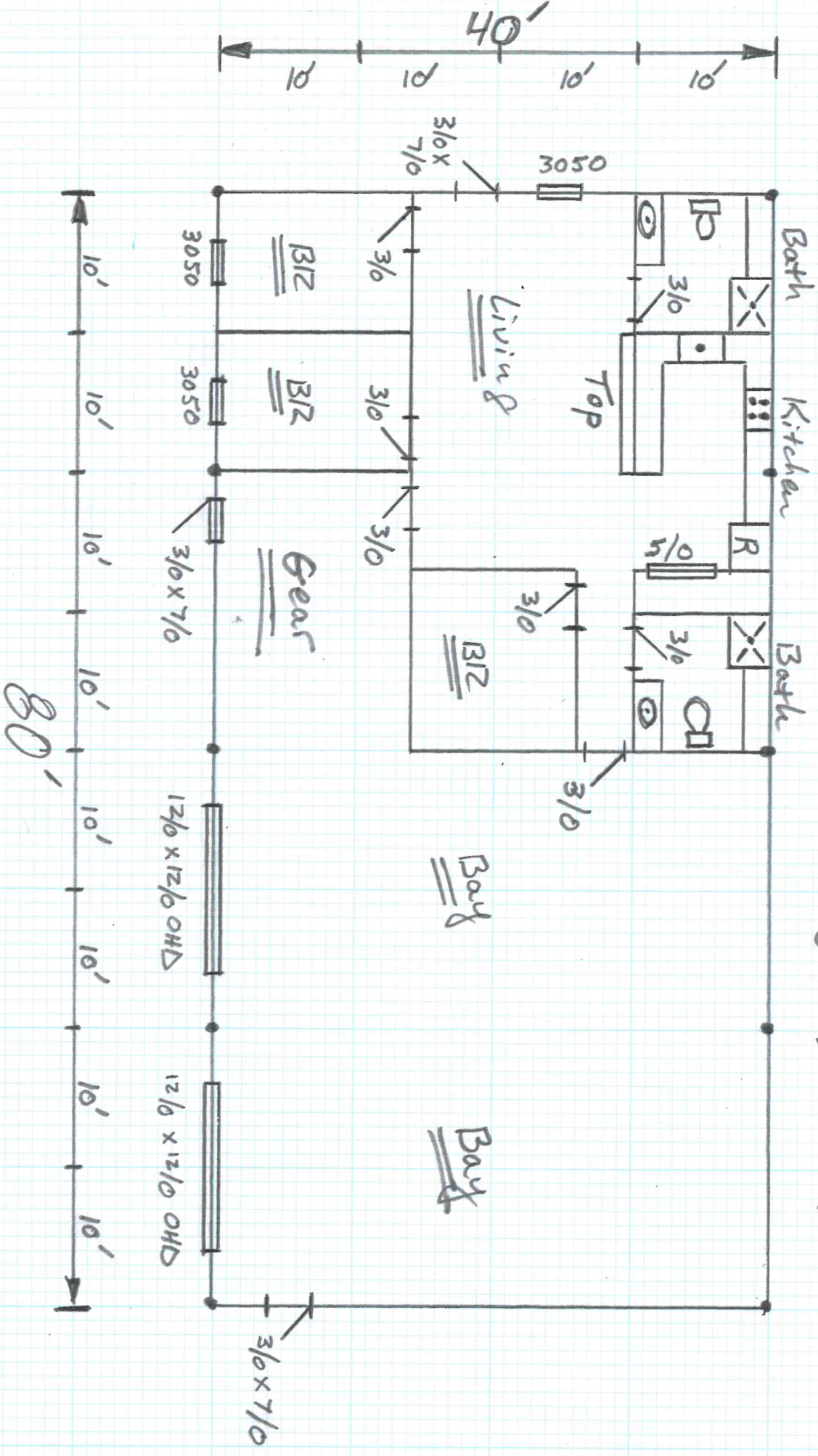


3 BR & 2 Bath Option  
 (~ +/- 1,320<sup>sq</sup>hsf Living Space) } + 2  
 Apparatus }  
 Bays }

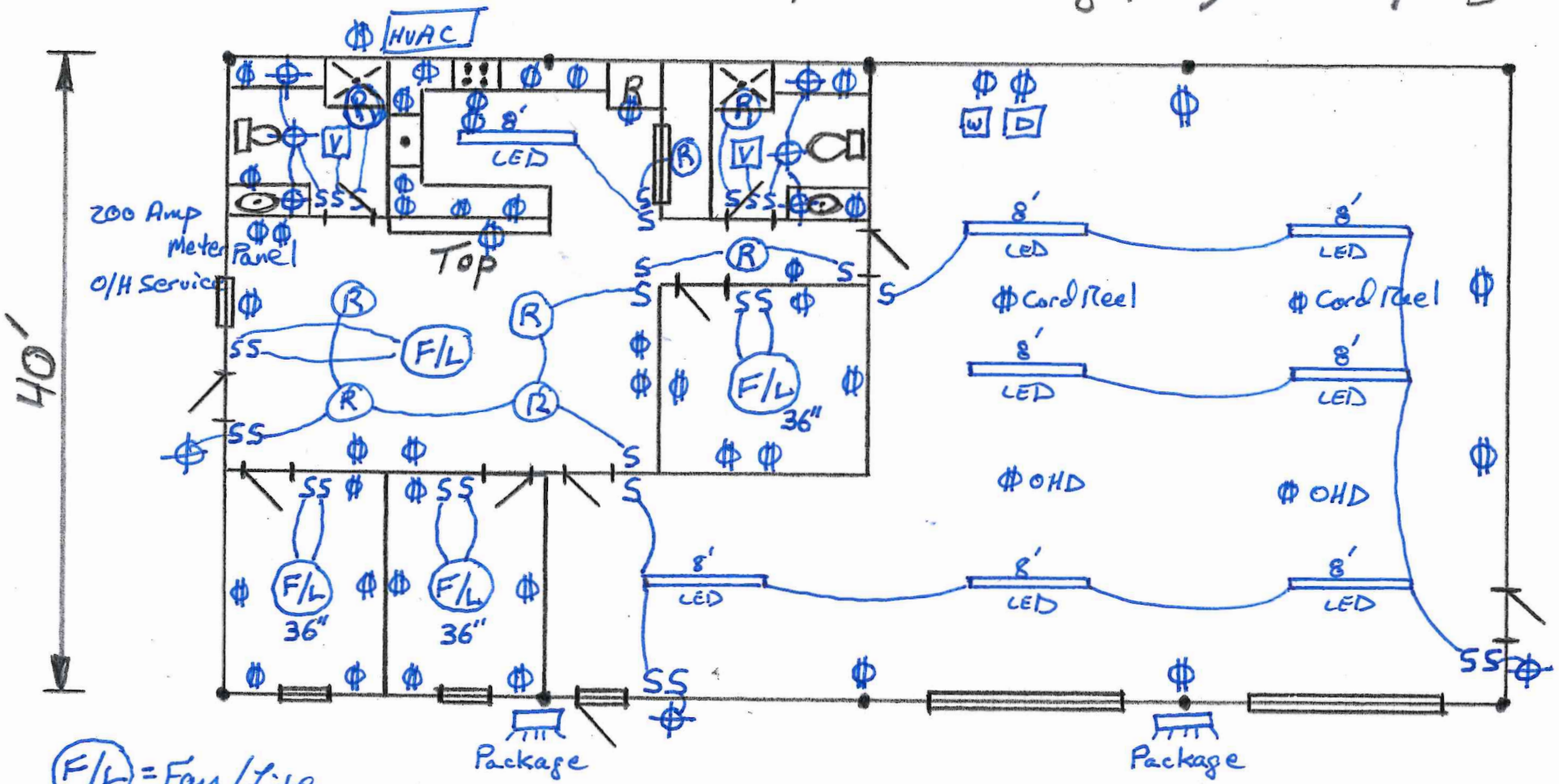




- Attic (S, Ⓞ, Ⓢ)
- HVAC Ⓞ @ Attic
- HWH Ⓞ @ Attic

3 BR & 2 Bath Option { + 2 Apparatus Bays }

( $\approx \pm 1,320^{\circ}$  hSF Living Space)



(F/L) = Fan/Lite

(V) = Vent

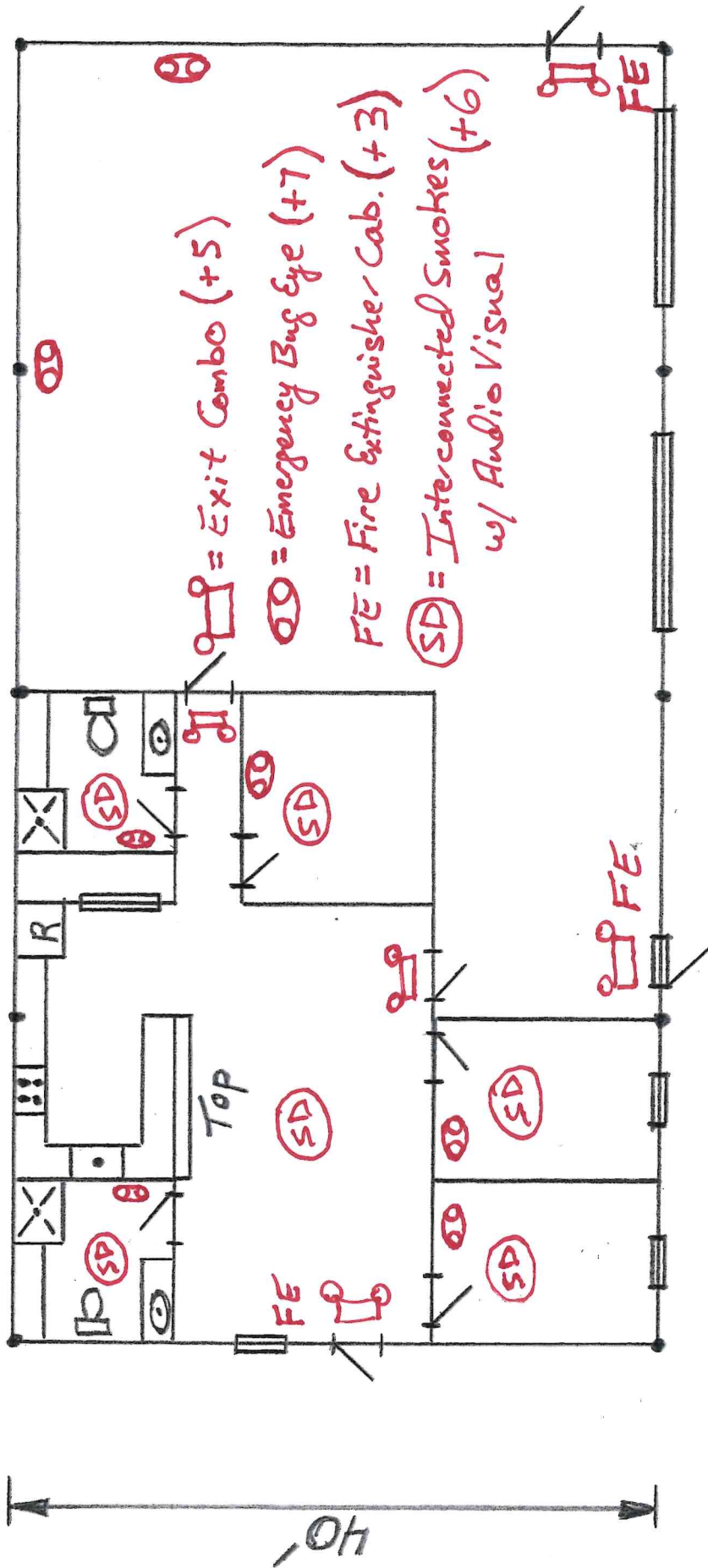
(R) = 6" Recess Can

All Electrical & Lighting Systems shall comply w/ NEC.

LED Lights @ All. 80'

LED Lights @ All.

3 BR & 2 Bath Option  
 (~ +/- 1,320<sup>sq</sup>hsF Living Space) } + 2 Apparatus Bays }



40' 80'