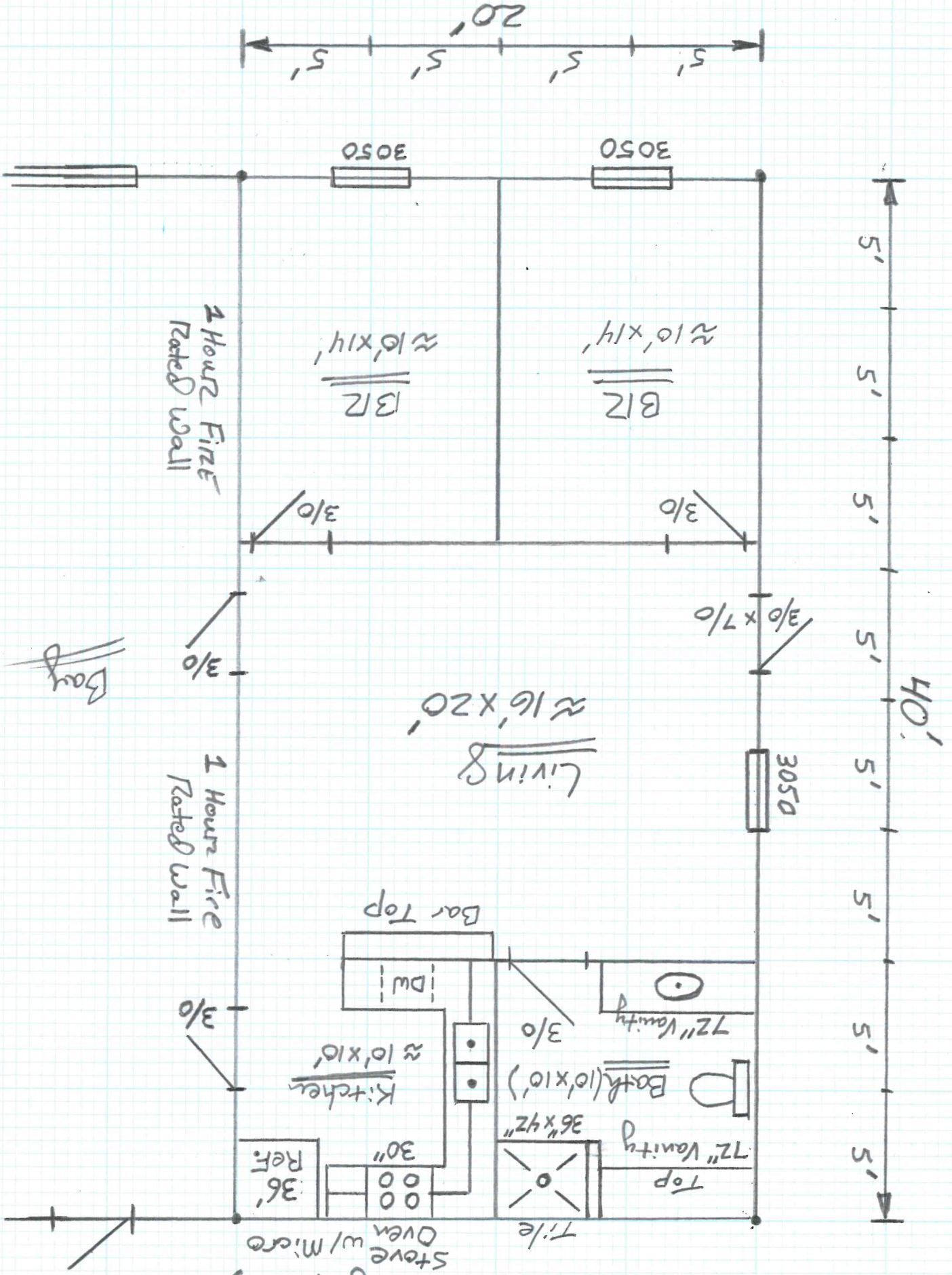


2 BR & 1 Bath Option
 (20' x 40' ≈ 800^{sq}hsf Living Space) } +3 Apparatus }
 } Bays }

2 BRZ & 1 Bath Option

(20' x 40' ≈ 800 sq ft Living Space)



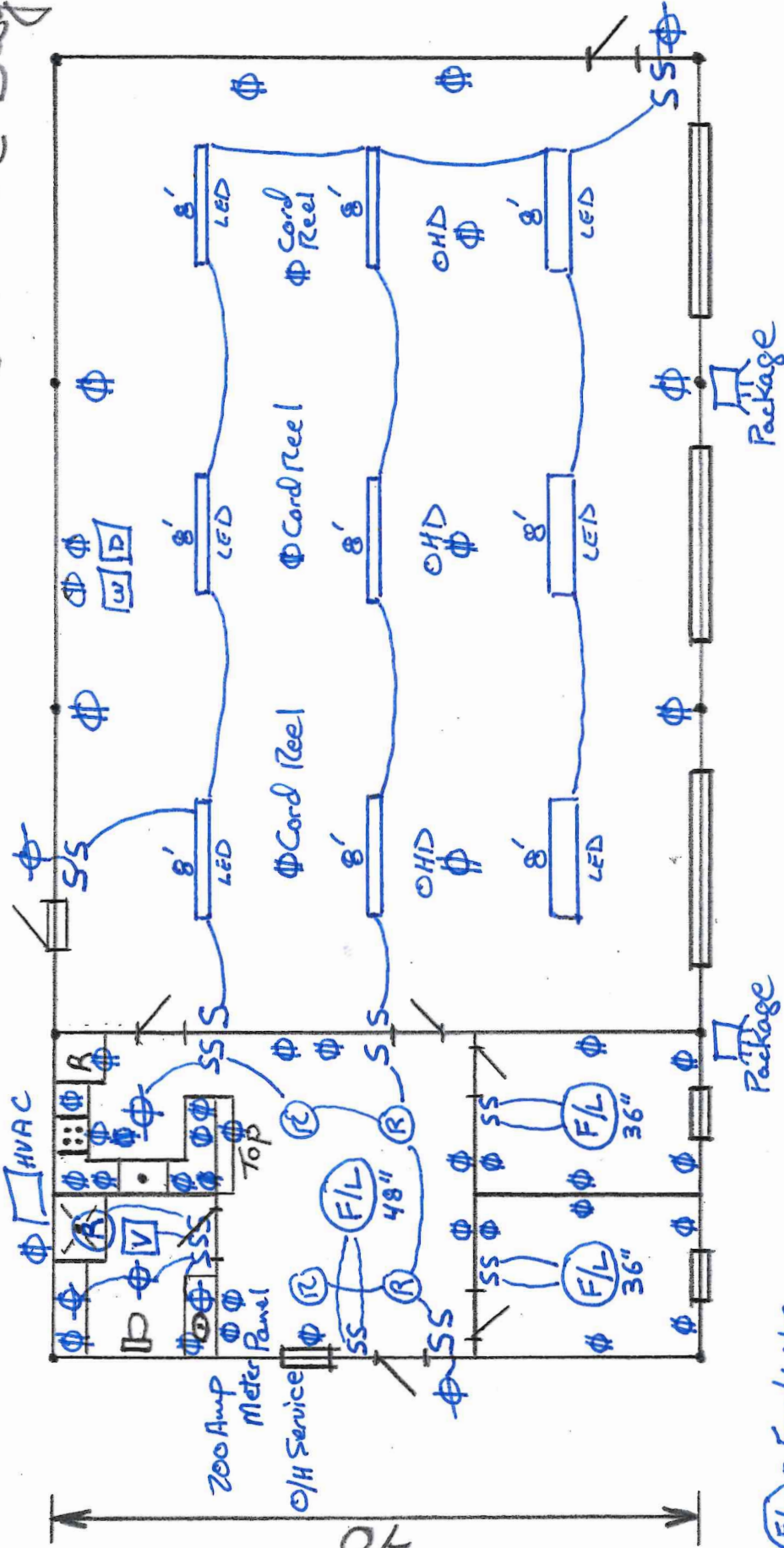
- Attic (S, Φ, Φ)
- HVAC Φ ⊙ Attic
- HWH Φ ⊙ Attic

2 BR & 1 Bath Option

(20' x 40' ≈ 800^{sq}hsF Living Space)

+3

Apparatus
Bays



(F/L) = Fan/Lite

⊞ = Vent

(R) = 6" Recess Can

All Electrical & Lighting Systems shall comply w/ NEC.

80'

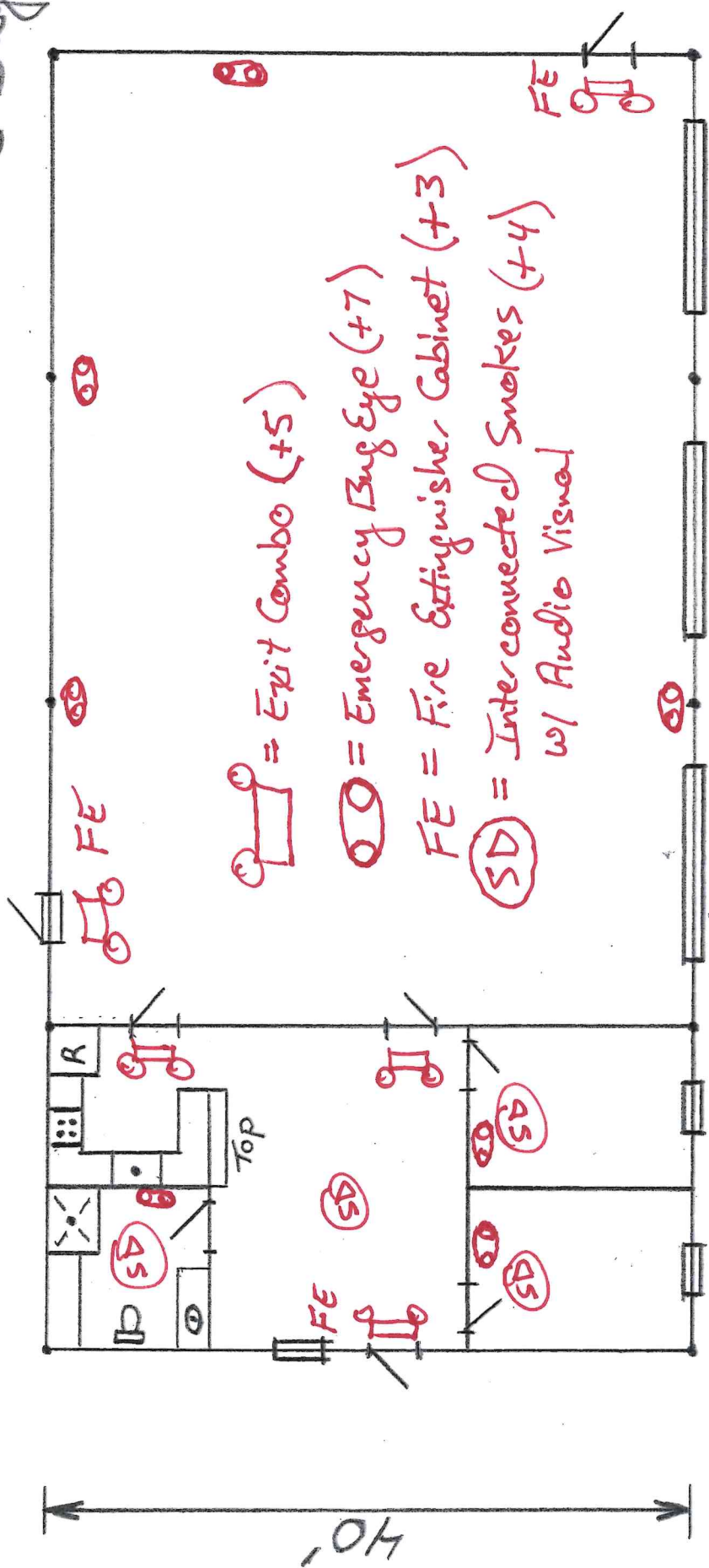
LED Lites @ All

LED Lites @ All

2 BR & 1 Bath Option

(20' x 40' ≈ 800^{sq} hsf Living Space)

+3 Apparatus Bays



☐ = Exit Combo (+5)

○ = Emergency Bug Eye (+7)

FE = Fire Extinguisher Cabinet (+3)

SD = Interconnected Smokes (+4) w/ Audio Visual

40'

80'