



TROUP COUNTY
BOARD OF COMMISSIONERS

PATRICK CREWS, CHAIRMAN, DISTRICT 1
ELLIS P. CADENHEAD, COMMISSIONER, DISTRICT 2
LEWIS C. DAVIS, JR., COMMISSIONER, DISTRICT 3
J. MORRIS JONES, III, COMMISSIONER, DISTRICT 4
RICHARD ENGLISH, JR., COMMISSIONER, DISTRICT 5
ERIC L. MOSLEY, COUNTY MANAGER

Daniel Parks

Croy Engineering, LLC

200 Cobb Parkway

Building 400, Suite 413

Marietta, Georgia 30062

Mr. Parks,

Troup County is requesting a proposal for design, Bid and Construction Administration Services of proposed new hangars at Lagrange Callaway Airport. The County wishes to construct 70x70 box hangars and Super T-Hangars as shown in map provided.

We are asking for Croy and consultants to provide the following:

- Architecture
- Structural Engineering
- Mechanical Engineering
- Electrical Engineering
- Plumbing Engineering
- Civil Engineering
- Topographical Survey
- Geotechnical Investigation
- Construction Material Testing
- DBE Update
- ALP Update
- Other services required or needed according to AC 150/5300-13B, *Airport Design*.
- Bidding of project to include addressing questions Via Addendum
- Review of bids with recommendation of award
- Construction Oversight





TROUP COUNTY
BOARD OF COMMISSIONERS

PATRICK CREWS, CHAIRMAN, DISTRICT 1
ELLIS P. CADENHEAD, COMMISSIONER, DISTRICT 2
LEWIS C. DAVIS, JR., COMMISSIONER, DISTRICT 3
J. MORRIS JONES, III, COMMISSIONER, DISTRICT 4
RICHARD ENGLISH, JR., COMMISSIONER, DISTRICT 5
ERIC L. MOSLEY, COUNTY MANAGER

Please include a proposed design, bid and construction schedule.

A handwritten signature in black ink that reads "Dexter Wells". The signature is written in a cursive style with a large initial "D".

Dexter Wells

Division Director of Public Services

Troup County Board of Commissioners

200 Airport Parkway

Lagrange, Georgia 30240

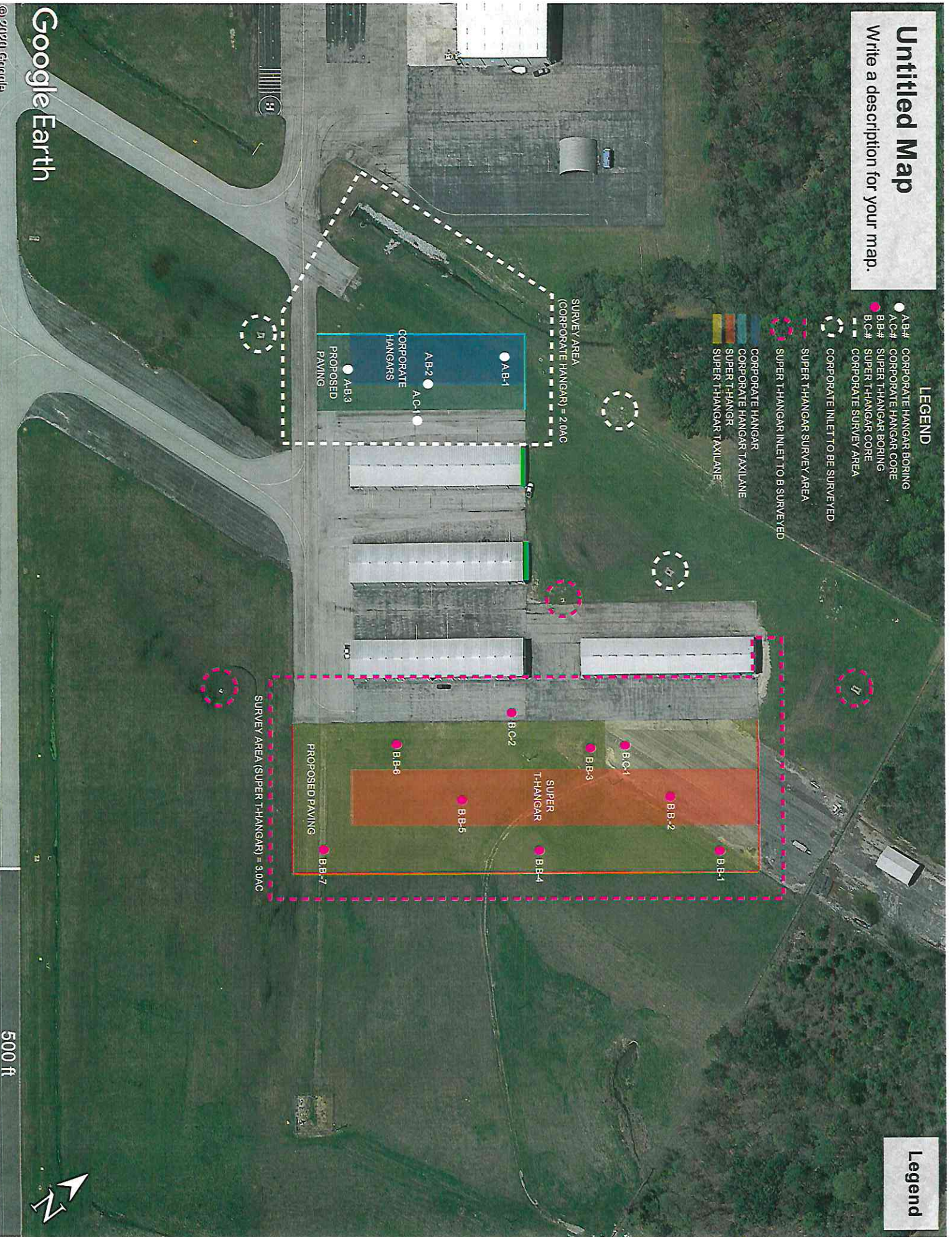
Untitled Map

Write a description for your map.

LEGEND

- A.B.# CORPORATE HANGAR BORING
- A.C.# CORPORATE HANGAR CORE
- B.B.# SUPER T-HANGAR BORING
- B.C.# SUPER T-HANGAR CORE
- CORPORATE SURVEY AREA
- CORPORATE INLET TO BE SURVEYED
- SUPER T-HANGAR SURVEY AREA
- SUPER T-HANGAR INLET TO B SURVEYED
- CORPORATE HANGAR
- CORPORATE HANGAR TAXILANE
- SUPER T-HANGAR
- SUPER T-HANGAR TAXILANE

Legend



Hangar Sizes Guidelines

-Add 10 ft to wingspan of aircraft for hangar width

-Add 1 ft to tail height for hangar door height

Corporate/Box Hangar Sizes			
Hangar Size	Square Footage	Door Height	Sample Aircraft
60 x 60	3,600	16 ft	Citation CJ2
70 x 70	4,900	20 ft	Hawker 850
80 x 80	6,400	24 ft	Falcon 50
100 x 100	10,000	26 ft	<ul style="list-style-type: none"> - One Gulfstream IV - Four King Air 100s - Eight Beech Baron 58s
120x120	14,400	26 ft	Gulfstream IV

T-Hangar Sizes (Sample)		
	Standard	Large T-Hangar
Door Width	42'	48'
Door Height	12'	14'
Wing Depth	18'	20'
Tail Depth	14'	18'
Tail Width	21'	24'
SF	1,050 sf	1,392 sf
Typical Aircraft	Singles/Light Twins	Singles/Larger Twins/VLJs